

# ROLLYCOLD



**EMAINOX**  
PROFESSIONAL FURNISHING SYSTEMS

## **Rollycold.**

Piatti freschi e bevande sempre a portata di mano con il nuovo carrello refrigerato di Emainox.

## **Rollycold.**

*Fresh dishes and drinks always at hand with the new refrigerated trolley by Emainox.*

## **Pratico.**

Dimensioni compatte e design ergonomico per una facile movimentazione.

## **Versatile.**

Adatto a cibi e bevande, ne mantiene la freschezza preservandone le proprietà organolettiche.

## **Igienico.**

Dotato di guide interne stampate per un'efficace pulizia e un'igiene ottimale.

## **Easy to move.**

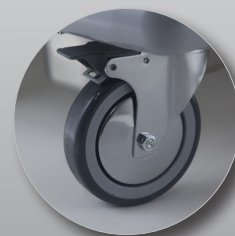
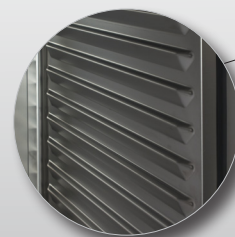
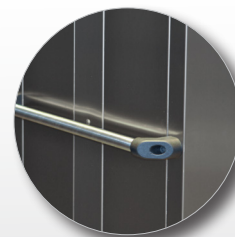
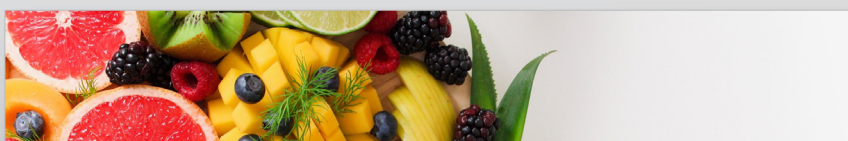
*Compact dimensions and ergonomic design for easy transport.*

## **Versatile.**

*Suitable for food and drink, it maintains their freshness preserving their organoleptic properties.*

## **Hygienic.**

*Equipped with embedded rails on internal walls for an effective cleaning and optimal hygiene.*







## Accessori.

Scegli tra i diversi accessori disponibili e personalizza la configurazione interna secondo le tue esigenze.

## Accessories.

*Choose from the available accessories to customize the internal configuration according to your needs.*

- SUPPORTO APPENDI GANCI  
*hook hangers support*
- GRIGLIE E TEGLIE GASTRONORM  
*grids and gastronorm trays*
- CASSETTI ESTRAIBILI CON O SENZA GUIDE TELESCOPICHE  
*removable drawers with or without telescopic rails*
- RIPIANI PORTABOTTIGLIE CON FERMABOTTIGLIE IN PLEXIGLASS  
*shelves for bottles positioning and plexiglass support as bottles holder*



## CARATTERISTICHE TECNICHE

Technical features

### ROLLYCOLD EXPRESS



### ROLLYCOLD CARGO



<b>Dimensioni esterne [mm] LxPxH</b> <i>External dimensions</i>	522x833x1295	522x833x1295	522x833x1675	522x833x1675
<b>Tipo di porta</b> <i>Door type</i>	battente / inox <i>hinged / stainless steel</i>	battente / vetro <i>hinged / glass</i>	battente / inox <i>hinged / stainless steel</i>	battente / vetro <i>hinged / glass</i>
<b>N. di porte</b> <i>N. of doors</i>	1	1	1	1
<b>N. teglie GN 1/1 H=20</b> <i>N. of containers GN 1/1 H=20</i>	12	12	19	19
<b>Illuminazione LED sul cielo</b> <i>LED lighting on the ceiling</i>	-	•	-	•
<b>Passo guide [mm]</b> <i>Rails distance</i>	55	55	55	55
<b>Temperatura [°C]</b> <i>Temperature</i>	+2 / +10	+2 / +10	+2 / +10	+2 / +10
<b>Gas refrigerante</b> <i>Refrigerant gas</i>	R290	R290	R290	R290
<b>Potenza frigorifera a -10°C [W]</b> <i>Cooling power at -10°C</i>	380	380	750	750
<b>Potenza totale [kW]</b> <i>Total power</i>	0,15	0,15	0,35	0,35
<b>Tensione alimentazione (50Hz)</b> <i>Supply voltage</i>	230V 1F+N	230V 1F+N	230V 1F+N	230V 1F+N
<b>Peso [Kg]</b> <i>Weight</i>	95	110	130	145

#### Emainox Srl

Via Pontebbana, 9 - 33098  
Valvasone Arzene (PN)  
T. +39 0434 85385  
F. +39 0434 85390  
info@emainox.it  
www.emainox.it